

# WE PUT SAFETY FIRST.



All our cribs, beds and furniture meet or exceed Canadian and American safety standards.

Most of our furniture has rounded corners, thus reducing the risk of injury.



All our cribs' slats respect the safety norm and are placed 2 and 3/8 inches apart.



Our toyboxes are equipped with a safety space in the front and strap hinges designed to prevent the cover from closing on little hands.

All bed side rails are assembled with screws instead of hooks to ensure maximum solidity and safety.



We use non-toxic lacquers that are lead-free.

# MORE REASONS TO CHOOSE

We understand that parents have to be practical.

Like all parents, you'll be mesmerized to see how your child grows fast! Soon you have to rethink the bedroom to add a study and play area and more storage unit. We understand that for parents, the purchase of bedroom furniture must be a long-term investment. At Dutailier, we build high-quality durable, practical and versatile furniture that is designed to evolve with your child's needs.

Our cribs are equipped with a three-position mattress support, making it easy to adjust the height as baby is growing up.

Our convertible cribs are in fact 4 items in 1: a crib that can be converted into a daybed or loveseat and a double bed simultaneously, offering the perfect solution to meet the needs of growing children.

Our beds' trundle or pop drawers are a must to store your child's possessions. Plus they can easily be transformed into an extra bed when a young friend is invited to sleep over.



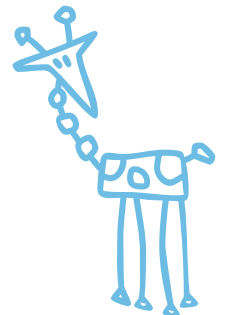
All our armoires, hutches and bookshelves have at least one adjustable shelf for extra practicality.

The inside of our armoires are equipped with a rod to hang clothes and an adjustable shelf for maximum storage space.



Except for models that are available in bunk beds\*, all our other beds have 3-position mattress support. Place the mattress at the highest position to install a trundle drawer or at the lowest to accommodate a thicker mattress.

\*This option is not available on those models due to assembly and safety reasons.



# DUTAILIER BEDROOM FURNITURE

*A vast choice of options for perfect decor harmonization and personalization*

Each family is unique, and so is every child. To help parents create the perfect bedroom environment to reflect their child's own personality, Dutailier offers a vast selection of furniture to meet their specific tastes and needs.

Each of our 10 collections has its unique personality and distinct styles – from traditional to transitional to modern – and each can be further personalized with our incomparable choice of options.

Our selection of cribs is comprised of 8 models manufactured in our facilities and 12 imported models.

With 30 different finishes including 4 antique ones, Dutailier offers the most comprehensive spectrum of colors in the industry.

The two-tone option allows you to further personalize your furniture by selecting a different finish for the tops and knobs. This option is available with all our finishes without any restrictions.



We also offer a selection of 18 beautiful metal knobs that are sure to add a touch of class to any dresser, night table or desk.

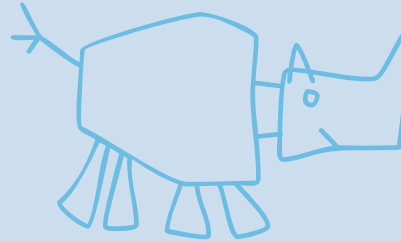
Most of our finishes are also available for our gliders, thus allowing for complete decor harmonization.



You find it difficult to choose among our 30 colors, or to select the perfect two-tone finish for a dresser? Visit Dutailier at [www.dutailier.com](http://www.dutailier.com). Just click on the Bedroom Furniture section to visualize the options of your choice.



# KNOW-HOW



## Top-of-the-line furniture

Our furniture is built from solid wood (birch, maple or beech) except for the sides and some assembly components. Since it is not a living material, we are using veneer for the sides of our furniture pieces to ensure that it won't warp or crack over time.

Our beds and cribs are built from 100% solid wood (birch, maple or beech) except for panel beds that are made from wood veneers.

The casing of all our drawers (front, sides and back) is made of 100% solid wood.



All our drawers have French dove-tail assembly and their metal glide mechanism has a lifetime warranty.



To ensure a maximum of durability and solidity, we assemble our beds and cribs using tenon and mortise joints that are glued.



All exposed surfaces are hand sanded which gives them an incredibly smooth finish.



Our armoire have superior quality adjustable door hinges.

We use extra-resistant packaging to minimize the risk of damage during shipping.